



University Hospitals
Coventry and Warwickshire
NHS Trust

UHCW's Journey towards developing 'Health on the High Street' in Rugby



Strategy for St Cross: 'Elective Hub'

- Following wide consultation, ***More than a Hospital*** Trust Strategy 2022-2030 committed to transform the Hospital of St Cross in Rugby - build modern facilities for growing population and improve staff and patient experience
- Aligns with 10 Year Plan- moving services closer to communities
- Focus on development of Elective Hub
- **Major phase of development: 4 theatre & 2 ward complex – planning permission obtained Feb 2025 and advanced design completed**
- 'Health on the High Street' planned for some outpatient services to create the required space on the site for new theatre complex but also provides accessible services in fit for purpose facilities



New Theatre and Ward Complex

Improving Access for our Patients Now

KEY ACHIEVEMENTS

- Same day hip and knee replacement surgery (Rugby Ambulatory Orthopaedic Service - RAOS) commenced January 2024 and has had an evaluation completed with patients.
- Using headsets to improve communication between Theatres and day surgery has led to significant improvements to start times and turnaround times.
- Increased the number of patients on ophthalmology cataracts theatre lists.
- Increased the number of patients receiving Neurosurgery injections theatre session from 10 to 12.
- First Breast Cancer Surgery theatre List delivered this week 8th September using new equipment.

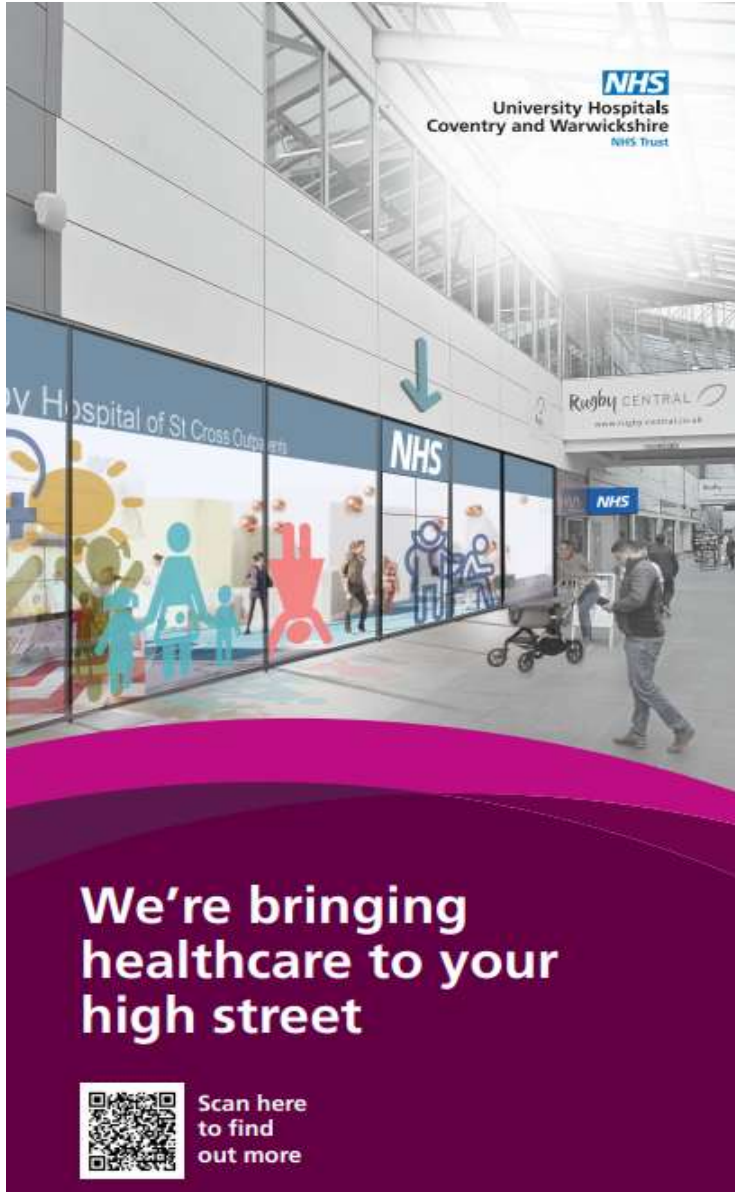


THE NEXT 3 MONTHS

- First general surgery theatre list to take place this month.
- Increase access to Ultrasound Fern Suite by extending hours to 6pm on Tuesdays (additional 12 patient per month) initially with a plan to extend to 5 days

Planning workshops with the clinical and operational teams





- Outpatient services that will be delivered in Rugby Town Centre:
 - **Diabetes & Endocrinology**
 - **Women's Health (Obstetrics & Gynaecology - including diagnostic procedures)**
 - **Children's Services**
- 14,000 planned patient attendances per year
- Increased footfall in the town

Better and more convenient access to services

Working with our Patients and Staff

Design Week in April 2025 with 45 attendees from the Specialties including patient representatives to co-design the space and walk in each others' shoes

205 Ideas generated for the new space



Agreed Principles:

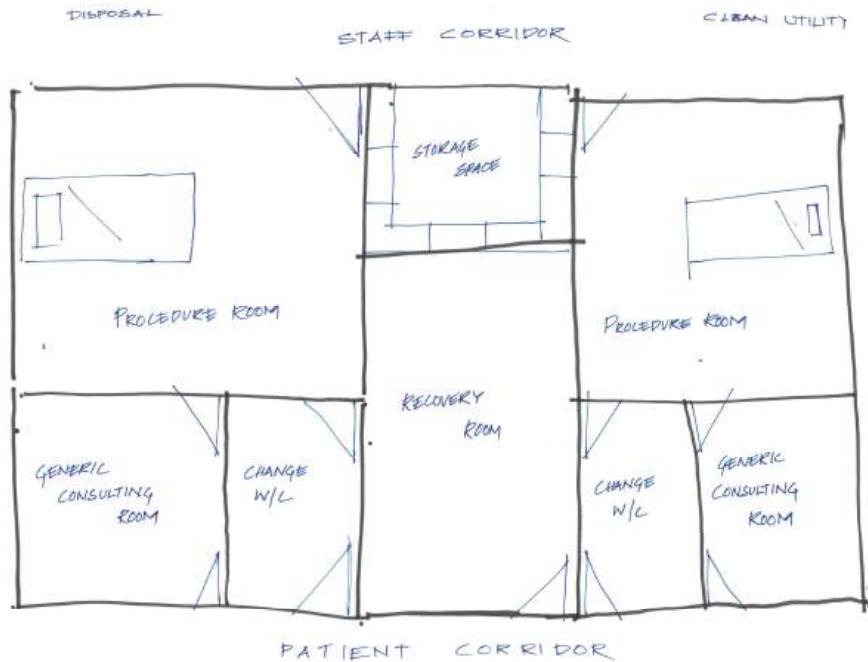
1. Dynamic Spaces with Multi Functions
2. Generic Spaces that are not speciality / service specific
3. Organised with patients as priority
4. Space efficient

Reflecting on the restrictions of the current space in a mock up!

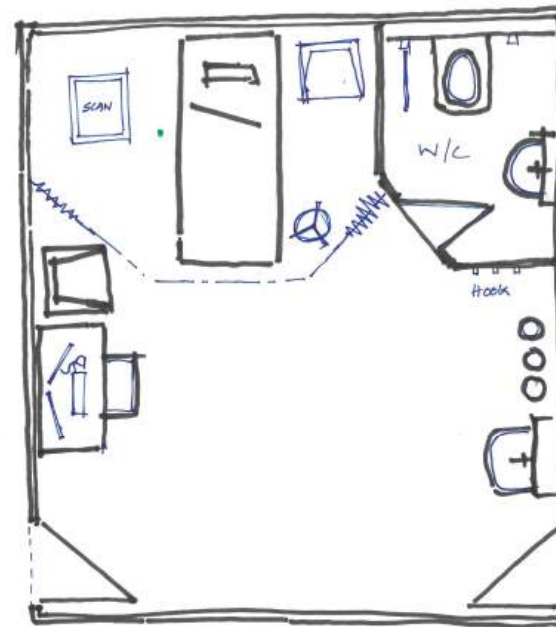


Patients and Staff - Initial Designs

Considering movement of patients, access to facilities and staff being able to access equipment easily

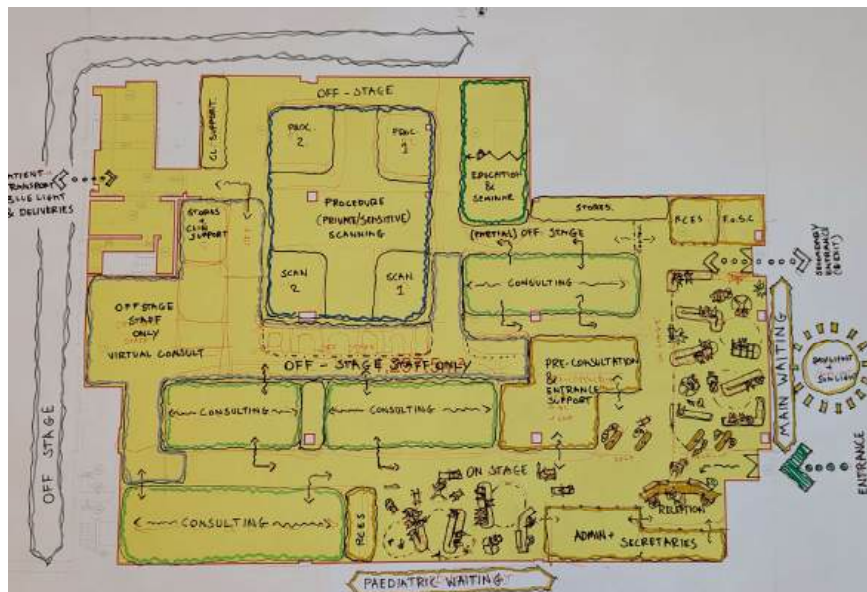


Procedure
Room



Scan Room

Health on the High Street Emerging Design



Anticipated Opening – Autumn/Winter 2026

